

ADJUSTABLE FLUORESCENT

Three models of adjustable fluorescent mirror or cabinet lights

Rotatable head enables modulation of light output

- perfect for above bathroom mirrors

Silver with black switch

Diffused glass diffuser

LLA13

T5 Linear 13W

575L x 30H x 90D

Fixing area: 575 x 30

LLA21

T5 Linear 21W

913L x 30H x 90D

Fixing area: 913 x 30

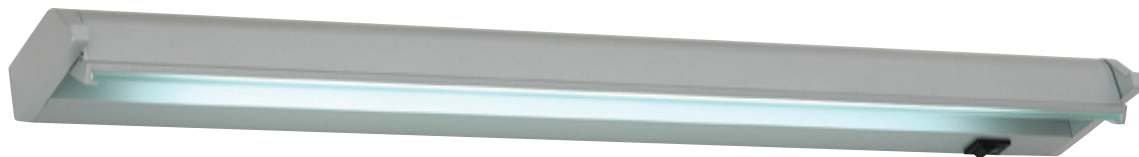
LLA28

T5 Linear 28W

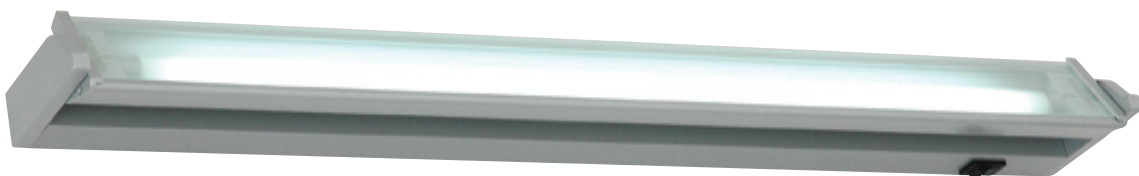
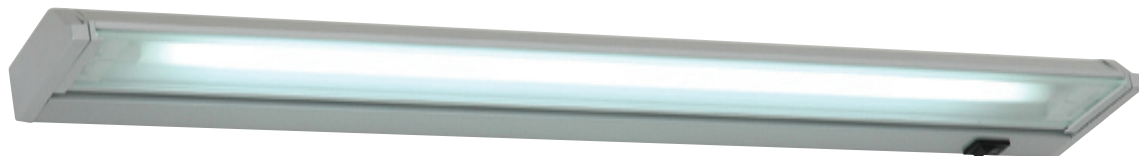
1213L x 30H x 90D

Fixing area: 1213 x 30

Supplied with lamp



Showing stages of full rotation of adjustable head



LED SHELF LIGHT

LLCLED IP43

230V LED Shelf light

Great feature light for bathrooms, lounges, restaurants, bars, etc.

3kg max load

Brushed aluminium with black switch

Etched PMMA diffuser

550W x 92H x 170D

Fixing area: 550 x 92



ADJUSTABLE FLUORESCENT

Two models of adjustable fluorescent mirror, cabinet or wall lights.
 Rotatable eyelid enables modulation of light output - perfect for
 above bathroom mirrors
Brushed aluminium with charcoal silicon grips
 Frosted PMMA diffuser

LLM14
 T5 Linear 14W
 672L x 95H x 57D
 Fixing area: 672 x 56

LLM21
 T5 Linear 21W
 974L x 95H x 57D
 Fixing area: 974 x 56

Supplied with lamp



Showing stages of
 full rotation of
 adjustable head



BEDSIDE AND PICTURE LIGHTS



PICTURE-T5-8W
 Adjustable arm
 T5 Linear 8W
Brushed chrome
 Head length: 365W
 Arm length: 170mm
 Base: 171W x 51H x 29D

Supplied with lamp



BEDSIDE-20W
 Excellent gooseneck bedside light
 Integral transformer
Chrome with black switch
Etched glass
 12V JC 20W
 Glass: 80Dia
 Arm length: 160mm
 Base: 81W x 81H x 34D

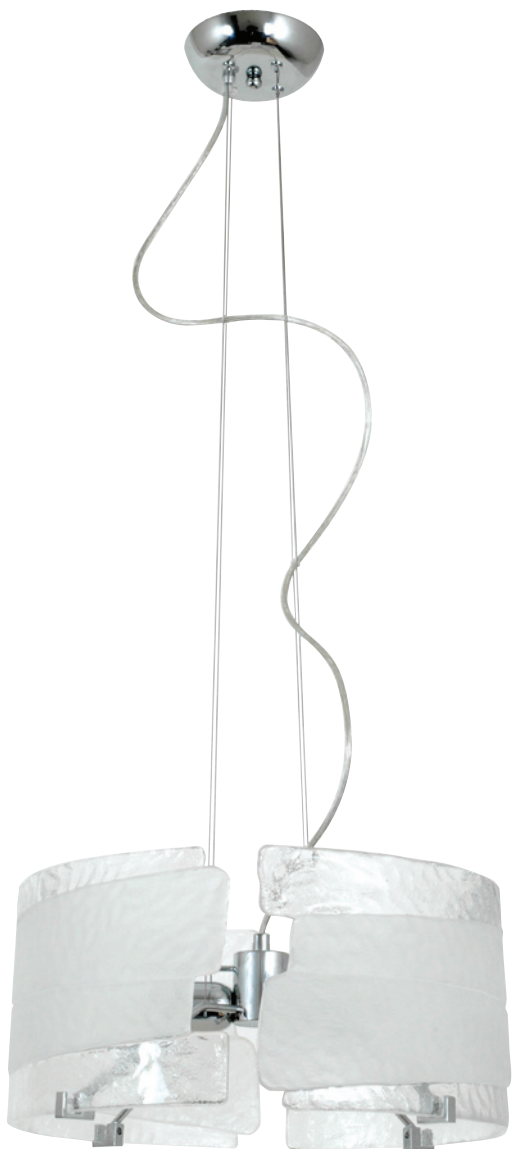


PICTURE-T5-13W
 Adjustable arm
 T5 Linear 13W
Brushed chrome
 Head length: 592W
 Arm length: 170mm
 Base: 171W x 51H x 29D

Supplied with lamp

CAST GLASS PENDANTS & WALL LIGHTS

Heavy cast moulded glass
 Chrome
 Clear (distorted) and etched glass



SALT P420
 2 x 230V E27 60W, or,
 2 x 230V 20W self-ballasted fluorescent
 Glass: 420Dia x 210H
 Fixing area: 137Dia



SALT P310
 230V E27 100W, or,
 230V 20W self-ballasted fluorescent
 Glass: 310Dia x 230H
 Fixing area: 137Dia

Tip: Use the new range of GLS E27 ER halogen lamps (page 13) to save 30% power, or, to get more light output from the same wattage lamp.



SALT W450
 2 x 230V E14 60W, or,
 2 x 230V self-ballasted fluorescent
 450W x 180H x 95D
 Fixing area: 193 x 51



SALT W340
 2 x 230V E14 60W, or,
 2 x 230V self-ballasted fluorescent
 340W x 220H x 100D
 Fixing area: 193 x 51